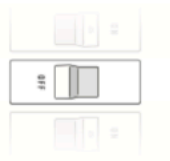


# Installation Guide

1

Turn off the power to your doorbell at the circuit breaker

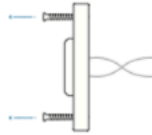


**TIP:** To locate the right switch, try turning each switch off, one at a time and seeing if your doorbell rings

2

Remove your existing doorbell

Unscrew the doorbell, then unhook the wires from the back of the doorbell by loosening the screws that hold the wire ends. Make sure the wires don't fall back into the wall.



**TIP:** Wrap the wires around a pencil or use tape to prevent them from falling back into the wall.

Need help? Call 1-888-957-4457

3

Thread the doorbell wires through the center of the mounting bracket



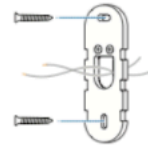
1 To correct the angle of your doorbell with the included angled base, go to **Optional Install B**

2 To install on a stone, brick, or stucco surface, go to **Optional Install C**

4

Screw the mounting bracket to the wall

Use the 2 included 1" screws to install the mounting bracket.

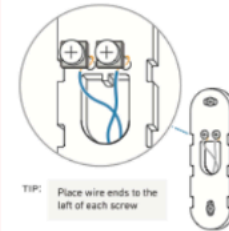


Need help? Call 1-888-957-4457

5

Connect the wires to the mounting bracket

- Loosen terminal screws
- Slide exposed wire **behind** the square washers and around each screw (wires can connect to either screw).
- Tighten screws to secure wires



**TIP:** Place wire ends to the left of each screw

6

Slide your doorbell into place

Push doorbell on to mounting bracket and slide down until it clicks.



CONTINUE ON BACK ▶

7

Turn on the power to your doorbell at the circuit breaker



8

Press the doorbell to test chime connection

Did your doorbell chime? If yes, it's working! If not, check that wires are secure.

**Note:** Camera battery may need a few minutes to charge before the camera can be connected to WiFi. LED ring will blink white after button press when camera is ready for setup.

Need help? Call 1-888-957-4457

9

Now it's time to setup your wifi

Open the SimpliSafe app on your mobile device and navigate to "set up my SimpliCam" to finish installing.



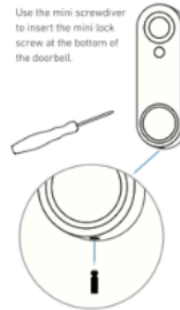
Scan this QR code to download the SimpliSafe app:



**OPTIONAL INSTALL A**

Secure doorbell

Use the mini screwdriver to insert the mini lock screw at the bottom of the doorbell.



Need help? Call 1-888-957-4457

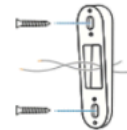
**OPTIONAL INSTALL B**

Installing with the angled base

The included angled base straightens a doorbell placed on a slanted surface such as siding or shingles, or may be used to adjust the angle of the camera up or down.

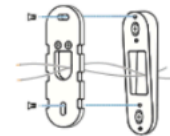
**First, screw the Angled Base to the wall**

Place the angled base with the smooth side to the wall. Thread doorbell wires through the center opening, then screw the bracket to the wall using the 1" screws.



**Then attach the Mounting Bracket on top**

Screw mounting bracket onto angle bracket using the two small angle-bracket screws.



Return to Step 5 to continue install

Need help? Call 1-888-957-4457

**OPTIONAL INSTALL C**

Installing on stone, brick, or stucco surfaces

**First, mark the hole location**  
Mark the wall first with a pencil, using the mounting bracket holes as a template.

**Then, drill holes and insert wall anchors**  
Drill a hole at each pencil mark with 3/16" (4.75mm) masonry bit. Insert wall anchors into the holes by gently tapping with a hammer or mallet.



Return to Step 4 to continue install